

GLOBAL  **BAL** **2013**
PHILLYTM

Passport

**Your Guide to
Exposition Events,
Participating Restaurants and
Sponsors,
and Information About Our
Global City**

Table of Contents

Welcome.....	1
A Word About The Global Philadelphia Association	2
GlobalPhilly™ Social Media Resources.....	3
Warming Up For The Trip.....	4 – 5
Treasure Hunt	6 – 7
Participating Restaurants	8 – 9
Guide to Events & Category Legend	10
PHLCVB Connection.....	11
Event Listings.....	12– 41
Map of Center City	30–31
Information on the Lithuanian Festival.....	42–44
Sponsor.....	45–51
Media Partners	52
Leadership of the Association	53
Members of the Association.....	54–57
GlobalPhilly™ 2013 Team	58
Membership Information	59
Application Form.....	60
Global Resources in PHL	61

Welcome to GlobalPhilly™ 2013

Presented by the Global Philadelphia Association, this unique 47-day exposition, will run from September 15 to November 1. Together with several “warm-up” events, GlobalPhilly™ 2013 features dozens of activities, events, and resources, each of which reflects a uniquely international facet of the Greater Philadelphia region.

This Passport will be your guide to all that there is to see, do, and explore. There will be something for everyone – from concerts to sporting events, from international restaurants to national culture celebrations, from tours to a treasure hunt, and from conferences to panel discussions. Whether admission to an event or activity is open to all (as most will be) or limited to specialized audiences, you will find information on each in the pages to follow. And you will be able to receive updates online throughout the expo by logging onto globalphiladelphia.org, and clicking “Passport.”

You may have a published copy or you may have downloaded one for yourself from our website. No matter. Hold on to your copy. The Passport can be used not only to discover what is happening, but also to track your participation. And running throughout the Passport is a wealth of information on our very international region.

Join us and **Discover the world in PHL!**

The Global Philadelphia Association would like to acknowledge the generosity of the exposition’s sponsors. Thank you for making GlobalPhilly™ 2013 possible.

The **Global Philadelphia Association**

consists of more than 100 internationally involved organizations, businesses, and individuals in Greater Philadelphia. It was created to assist—and to encourage greater interaction among—the many organizations and people who are engaged in international activity in the Greater Philadelphia Region, to promote the development of an international consciousness within the region, and to enhance the region's global profile.

For more events or information during and after the GlobalPhilly™ Expo, take a look at our website:

www.globalphiladelphia.org

Global Philadelphia Association Social Media



www.Facebook.com/GlobalPhiladelphiaAssociation



[@GlobalPhila](https://twitter.com/GlobalPhila)



<http://www.linkedin.com/groups/Global-Philadelphia-Association>

Global Philadelphia Association
2500 One Liberty Place
Philadelphia, PA 19103
Phone: 215-851-8112
info@globalphiladelphia.org

GlobalPhilly™

Social Media



www.Facebook.com/GlobalPhilly2013



@GlobalPhilly13 | #GP13



<http://www.globalphilly13.tumblr.com>



Scan Here!

This will redirect you to the GlobalPhilly™ Section of the GPA website, where you can find more information on GP13, in addition to the most up to date listing of events!

Warming Up for the Trip

Although the exposition doesn't officially begin until September 15, there are a number of events that will get you into an international frame of mind. We encourage you to warm up for the expo by attending the following:

1. Lithuanian Festival

Presenter: Lithuanian Consulate

Dates: 9/1/2013 - 11/10/2013

Location: Varies

Cost: Varies

Open to public

Expected Audience: Global Philadelphians

Special instructions: Check web site globalphiladelphia.org/initiatives/global-philly2013/events

In celebration of Lithuania's presidency of the Council of the European Union in the second half of 2013, the Lithuanian Embassy in Washington and the Honorary Consulate of Pennsylvania are pleased to present 13 events of the Lithuanian Festival 2013. **More details on pages 42 - 44.**

2. First Thursday

Presenter: International Visitors Council

Date: 9/5/2013 5:30pm - 7:30pm

Location: Courtyard Marriot, Center City, 21 N Juniper St, Philadelphia, PA 19107

Cost: Free for Members, \$15 Non-members in advance, \$20 at the door

Open to public

Expected Guests: Professionals and students interested in international relations, business, and people

Special Instructions: RSVP alan.hatfield@phila.gov or 215.683.0992

At International Visitors Council (IVC)'s First Thursday prime networking events, attendees can expect to meet interesting and lively people from around the world! This is guaranteed to be a friendly evening of citizen diplomacy that will create lasting and positive impressions of the U.S., Philadelphia and of attendees.

3. Beyond Sport Summit 2013

Presenter: Benchmark Sport & The Philadelphia Eagles

Date: 9/9/2013-9/11/2013

Location: Various

Cost: \$295-\$5000 (see Special Instructions)

Open to public

Expected Audience: Global Philadelphians

Special instructions: Registration required at www.beyondsport.org

Each year, the world's leaders in sport, business, innovation, philanthropy, development and government come together for an event often described as 'unmissable,' 'a hub for social change' and 'the place for networking and partnerships to be done.' Be a part of the biggest gathering for sport and social change: Beyond Sport Summit 2013 – Philadelphia, Sept 9-11.

4. International Architecture Panel "Architecture and Identity"

Presenter: Italian Professionals in Philadelphia & Consulate General of Italy
Date: 9/10/2013 6:00pm
Location: Athenaeum of Philadelphia, 219 S. 6th St., Philadelphia, PA 19106
Cost: Free
Open to public
Expected Audience: Philadelphians with an interest in architecture
Special instructions: Visit www.piphilly.org for more information

Italian Professionals in Philadelphia and the Italian Consulate of Philadelphia present the panel "Architecture and Identity" to discuss and celebrate the importance and artistic resonance of architecture and its place in Philadelphia and the world at large.

5. US-Japan Health Sciences Dialogue

Presenter: Japan America Society of Greater Philadelphia
Date: 9/10/2013 - 9/11/2013
Location: The Union League of Philadelphia, 140 S. Broad St., Philadelphia PA 19102
Cost: Early bird : General \$955, Academic/Gov't/Tech. \$345
Not Open to Public
Expected Audience: International Biopharmaceutical executives, dealmakers, investors, professional advisors, and policy KOLs
Special instructions: Registration required at www.healthsciencesdialogue.com

The U.S.-Japan Health Sciences Dialogue is a global event for collaboration attended by Western, Japanese, and Asian biopharmaceutical executives, dealmakers, investors, professional advisors, and policy KOLs who wish to share their insights on best practices and growth opportunities.

6. Urban Identity Lab: Interdisciplinary Design Charrette

Presenter: Italian Professionals in Philadelphia
Date: 9/13/2013
Location: Wharton's new MBA Student Life Space. 2401 Walnut Street, 8th floor, Philadelphia, PA 19103
Cost: Free
Not Open to Public
Expected Audience: Students, Academics, Professionals, Representatives of Public Institutions
Special instructions: Only by invitation

Come to this interdisciplinary confluence of academic and business minds for a timely discussion on the experience of urban living.

7. Photography Exhibition of International Communities in PHL

Presenter: Drexel University
Date: 9/13/2013 - 10/31/2013
Location: James E. Marks Intercultural Center, 30 S. 33rd St., Philadelphia, PA 19104
Cost: Free
Open to Public
Expected Audience: Global Philadelphians
Special instructions: Visit www.drexel.edu/international for more information

"Philadelphia as Sanctuary" in Drexel University Gallery space telling the story of the international communities in Philadelphia. In partnership with Peace Day Philly (PDP) and the American Society of Media Photographers (ASMP).

Treasure Hunt

Philadelphia and its surrounding counties have a treasure trove of internationally prominent institutions and locations. **We have selected 15, and your challenge will be to find them.** Below you will find the first four clues. Throughout the course of the expo, eleven more will be published (check out our website, Facebook, and Twitter each week for new clues). Decipher the clues, visit each institution or location, and go to its visitor center or reception area. There you can get your Passport stamped, or collect other evidence you were there. There will be awards for those who have visited the most sites!

- Clues will be posted every Monday and Friday during the expo, onto the @GlobalPhilly2013 Twitter, and on Facebook #GP13
- Clues will also be available on the GP13 Website under the Passport
- Send your completed Treasure Hunt Clues to info@globalphiladelphia.org

Winners will be announced at GP13 Closing Reception

1. I sit on a square in the heart of the “greene countrie towne” founded by British Quaker William Penn.



2. I am Philadelphia’s most famous “framing shop.” The best work done here took place between 1770 and 1790 and has influenced other countries ever since.

3. Cancer-fighting drugs are discovered in this world-class research facility in West Philadelphia. “You may not see our name, but our fingerprints are all over them.”



4. I was once a Victorian Garden. Now my 42 acres hold “occupants” from all over the globe.

5. _____



6. _____

7. _____ 

 8. _____

9. _____ 

 10. _____

11. _____ 

 12. _____

13. _____ 

 14. _____

15. _____ 

A Special Treat Awaits International

Have dinner at each of them during the Expo, and be sure to check out the specially crafted “GlobalPhilly™ 2013” appetizers served at these select internationally themed restaurants. This special component of the GlobalPhilly™ Exposition is driven by *Top Chef* winner Kevin Sbraga of Sbraga Restaurant, and his colleagues at each of the participating locations. These culinary masters include:

Kevin Sbraga from *Sbraga*

44 South Broad Street
Philadelphia, PA 19146

215.735.1913



Peter Woolsey from *Bistrot La Minette*



623 South 6th Street
Philadelphia, PA 19147

215.925.8000



Tim Spinner from *La Calaca Feliz*

2321 Fairmount Avenue
Philadelphia, PA 19130

215.787.9930



You at Seven Distinctly Restaurants

Head Chef from *Tashan*

777 South Broad Street
Philadelphia PA 19147

267.687.2170

Tashan
modern • indian • kitchen • lounge

Hiroyuki "Zama" Tanaka from *Zama*

128 South 19th Street
Philadelphia, PA 19103

215.568.1027



Oliver Desaintmartin from *Zinc*



246 South 11th Street
Philadelphia, PA 19107

215.351.9901



Han Chiang from *Han Dynasty*

108 Chestnut St.
Philadelphia, PA 19106
215.922.1988

3711 Market St.
Philadelphia PA 19104
215.222.3711

4356 Main St.
Philadelphia PA
215.508.2066

70 Buckwalter Rd
Royersford PA
610.792.9600

260 N. Pottstown Pike
Exton, PA
610.524.4002

404 Route 70
Cherry Hill, NJ 08034
856.428.0088



Guide to Events

The following pages will act as a guide to the many events and activities that are in store for GlobalPhilly™ 2013 travelers from September to November. Each listing will provide important event information as well as details such as whether the event is open to the public or a selected audience, free or requires a modest fee, or whether registration is necessary.

All events in the exposition debuted in the Passport fall under one or more categories, each represented by a unique symbol. For a legend of the categories and symbols, see below.



Advocacy



Education



Arts



Heritage



Commerce



Sports



Cuisine

PHLCVB Categories

Similar to the GP13 categories, the Philadelphia Convention & Visitors Bureau has its own legend of categories on their website www.DiscoverPHL.com to sort the events and attractions they highlight year-round in PHL. This guide connects GP13 categories to their corresponding PHLCVB categories or sub-categories.

GP13

PHLCVB

Arts

Creative Spirit

Cuisine

Culinary

Advocacy

Freedom, Democracy,
& America

Heritage

American History +
Authentic American

Education

Innovation & Education

Commerce

Collaboration

Sports

Outdoor Life & Sports

Events

The following pages will be your guide to the **dozens of events** happening throughout **GlobalPhilly™ 2013**. Browse, mark your calendar, and come join a month and a half of international events and see how **The World is Happening in PHL.**

Please note that all events are subject to change. Consult www.globalphiladelphia.org/initiatives/globalphilly2013 for the latest updates.

8. International Day of Peace

Presenter: Peace Day Philly

Date: 9/14/2013 - 9/22/2013

Location: Various

Cost: Free or Minimal charge

Open to Public

Expected Audience: Global Philadelphians

Special Instructions: Visit www.peacedayphilly.org for complete schedule

Peace Day is a concept that was established by the United Nations with the purpose of uplifting the ideal of peace at the international level, but also at the levels of community and the individual. Over 25 diverse peace related events involving a local and/or international focus will take place as part of PDP 2013 between Sept. 14th - 22nd. PDP's key community event will be 9/20 at 5:30pm. For more about events being offered as part of PDP 2013, as well as Peace Day activity ideas, visit www.peacedayphilly.org and follow them on Facebook and Twitter @peacedayphilly.

9. Mexican Independence Day Festival

Presenter: Mexican Consulate & Mexican Cultural Center

Date: 9/15/2013

Location: Great Plaza at Penn's Landing, Chestnut Street and Columbus Blvd, Philadelphia, PA 19106

Cost: Free

Open to Public

Expected Audience: Mexicans, Mexican Americans and Global Philadelphians

Special Instructions: Visit www.mexicanculturalcenter.org for more information

Join thousands of people to celebrate the Mexican Independence Day at Penn's Landing Great Plaza. This festival is part of the PECO Multicultural Series.



John H. Gibbon, Jr was the Philadelphian who invented the world's first heart-lung bypass machine at Jefferson Medical College.

10. xCultural (Multicultural) Passport to Philadelphia

Presenter: Mayor's Office of Immigrant and Multicultural Affairs

Date: 9/15/2013 - 9/22/2013

Location: Various

Cost: Free

Open to Public

Expected Audience: Global Philadelphians

Special Instructions: Check web site globalphiladelphia.org/initiatives/globalphilly2013/events

A week-long celebration of immigrant heritage and cultural diversity. This is a great contribution to the National Welcoming Cities and Counties Initiative.

11. Global Culture Digital Exposition

Presenter: Free Library

Date: 9/15/2013 - 11/1/2013

Location: Free Library of Philadelphia, 1901 Vine St., Philadelphia, PA 19103

Cost: Free

Open to Public

Expected Audience: Global Philadelphians

Special Instructions: Visit www.freelibrary.org for more information

As a leading institution of public access to communications media and as a promoter of media literacy, the unprecedented Free Library of Philadelphia is introducing a new exposition to carry forward the idea that information should be available to anyone at no cost.

12. Cybersecurity and Cyber-Insecurity

Presenter: World Affairs Council of Philadelphia

Date: 9/16/2013 5:00pm

Location: DoubleTree Philadelphia Center City, 237 South Broad St, Philadelphia, PA 19107

Cost: \$25 Members, \$35 General Public, \$10 Students

Open to Public

Expected Audience: Council members, general public, students

Special Instructions: Registration required at www.wacphila.org

The World Affairs Council of Philadelphia invites you to join as Congressman Pat Meehan (R-PA, 7), Chairman, Subcommittee on Cybersecurity, Infrastructure Protection and Security Technologies, House Homeland Security Committee and Barton Gellman, Pulitzer Prize-winning journalist who broke the Snowden story with The Washington Post discuss cybersecurity issues. As the world becomes increasingly more dependent upon computer systems, networks, and the internet, the importance of cybersecurity becomes ever more critical—and the threats of cyber-insecurity are ever present.

13. Dinner Honoring Jose Garces

Presenter: Geographical Society of Philadelphia

Date: 9/17/2013 6:00pm

Location: JG Domestic Restaurant, Cira Centre, 2929 Arch Street, Philadelphia, PA 19104

Cost: \$130 GSP Members, \$150 Non-members

Open to Public

Expected Audience: Geo. Society Members and Global Philadelphians

Special Instructions: Buy tickets at www.geographicalsociety.org

Very few chefs worldwide are acclaimed with the title, Iron Chef. The Geographical Society invites you to wine and dine with Philadelphia's own Iron Chef, Jose Garces. He has selected the five course feast for the Society's Annual Dinner from his favorite recipes of Ecuador, Peru, Chile, Mexico, Cuba and Spain. Enjoy hearing Jose Garces' stories and receive a signed copy of his latest cookbook, *The Latin Road Home*.

14. Evening Exchange: New Research on Immigrant Entrepreneurs

Presenter: Welcoming Center for New Pennsylvanians

Date: 9/17/2013 5:30 - 8:00pm

Location: Welcoming Center for New Pennsylvanians. 1617 John F. Kennedy Blvd., Suite 555, Philadelphia, PA 19103

Cost: Free

Not Open to the Public

Expected Audience: WCNP Partners and Guests

Special Instructions: Invitation only

New research from Tufts University and the Immigrant Learning Center is shedding light on immigrant entrepreneurs in the food, transportation, and building services industries in Pennsylvania. A select group of business and civic leaders will join Welcoming Center staff and ILC's Dr. Marcia Drew Hohn for an enlightening and informative evening highlighting the most notable findings.

15. Drexel Teach-In for Peacebuilding

Presenter: Drexel University

Date: 9/17/2013 1:00 - 6:00pm

Location: James E. Marks Intercultural Center 30 S. 33rd Street, Philadelphia, PA 19104

Cost: Free

Open to Public

Expected Audience: General Public

Special Instructions: Call 215.895.1863 to register

Supported by the United States Institute of Peace public education for peacebuilding support program. A day of interactive workshops for practical skill development in peacebuilding. Facilitated by the Peace Center and other local experts. Mini workshops on: Mediation, International Conflict Resolution, International Organizations, Peace Education and Gender

16. Videoconference with filmmaker Dr. Patrick Hiller on: The Evolution of a Global Peace System

Presenter: Global Education Motivators

Date: 9/18/2013 1:30 - 3:15pm

Location: Chestnut Hill College, 9601 Germantown Ave., Philadelphia, PA, 19118

Cost: Free

Not Open to Public

Expected Audience: Program is for CHC students.

Special Instructions: Visit www.gem-ngo.org for more information

GEM has students at CHC during their "common time" (no classes in session) in an interactive discussion with Dr. Patrick Hiller from Portland State University regarding his positive look at the movement towards a Culture of Peace.

Dr. Hiller is the documentary filmmaker for The Evolution of a Global Peace System.

17. Philadelphia: Global City

Presenter: Consular Corps of Greater Philadelphia

Date: 9/18/2013 5:30 - 7:30pm

Location: Montgomery McCracken Walker & Rhoads LLP, 123 S Broad St., Philadelphia PA 19109

Cost: \$10 for CCPA members and partners, \$30 for non-members.

Open to Public

Expected Audience: General public interested by a global business perspective of Philadelphia

Special Instructions: Reservations and pre-payment are required. Call 215.545.7766

A business panel giving an overview of the major international organizations in Philadelphia with prominent figures from Philadelphia politics, the non-profit sector, and business. These leaders in their respective fields are scheduled to appear as part of this panel: Michael Scullin, Councilman David Oh, Jack Ferguson, Mark Gale, Thomas Morr, Linda Conlin, Nancy Gilboy, Zabeth Teelucksingh and Peter Gonzalez.

18. Joel Fry Discussing Generations of Bartram's Garden

Presenter: Friends of Independence National Historical Park

Date: 9/18/2013 7:00pm

Location: The Benjamin Franklin Museum located in Franklin Court. Entrance is from Market or Chestnut Streets, between 3rd and 4th Streets, Philadelphia PA19106

Cost: \$10 Members, \$15 Non-members

Open to Public

Expected Audience: General Public (limited tickets available)

Special Instructions: Visit www.friendsofindependence.org for more information

Join the Friends of Independence as they welcome Joel Fry, Curator of Bartram's Garden. Mr. Fry will be discussing the generations of Bartram's, from their legacy to their relationships with Benjamin Franklin, George Washington, Thomas Jefferson and other figures of the later Revolutionary period and Federal period in Philadelphia.

19. European Cinema Uncovered

Presenter: International House Philadelphia

Date: 9/19/2013 7:00pm

Location: International House Philadelphia, 3701 Chestnut St., Philadelphia, PA 19104

Cost: Free

Open to Public

Expected Audience: Global Philadelphians interested in world culture and international cinema

Special Instructions: Visit www.ihousephilly.org for more information

The seven films that comprise the film program Cinematic Inclusions are the highlights of 20th century Lithuanian documentary cinema. Like mineral inclusions, these films capture the relics of times gone by. The filmmakers arrested moments from their present, and by so doing, captured the past. Some of these images have become imprinted on the collective memory of the nation, whilst others have been left to obscurity.

20. P3 Soccer tournament

Presenter: United Nations Association of Greater Philadelphia

Date: 9/22/2013 12:00 - 8:00pm

Location: Penn Park, Walnut St to South St along 32nd St, Philadelphia, PA 19104

Cost: Free or Minimal \$5

Open to Public

Expected Audience: Global Philadelphians

Special Instructions: Email p3soccer4peace@gmail.com for more information

Can soccer pave the way for diplomacy between nations? The UNA-GP wants people to enjoy the play and parlay of the world's most popular sport, and to uncover its potential for peacebuilding. Six teams will compete in this inaugural soccer tournament that will be open to the public to spectate.

21. Training program for nursing students from Bermuda

Presenter: Philadelphia International Medicine

Date: 9/23/2013 - 10/4/2013

Location: Philadelphia International Medicine Hospital Network

Cost: Free

Not open to Public

Expected Audience: Nursing students from Bermuda

Special Instructions: Visit www.philadelphiamedicine.com for more information

Temple University Health System and Bermuda College are collaborating to expand the clinical experiences for the nursing students. PIM will host the first class of the recently launched nursing program at Bermuda College, who will come to Philadelphia from Sept. 23 to Oct. 4 as part of their clinical skills training. During their two-week stay, the students will attend lectures at Temple University Hospital, attend a luncheon with Temple University nursing students; participate in lectures on quality and core measures; and attend a luncheon with hospital leadership. The students also will attend a medical simulation lab in which they will participate in computer-generated programs that run through different medical emergencies.

22. Globalization and the Changing Balance of Economic Power: Villanova MBA Open House



Presenter: Villanova School of Business (Center for Global Leadership)

Date: 9/24/2013 6:00pm

Location: The HUB, CityView, United Plaza, 14th Floor, 30 S. 17th Street, Philadelphia, PA, 19103

Cost: Free

Open to Public

Expected Audience: General Public (limited tickets available)

Special Instructions: For information about registration call 610.519.4395.

Professor Jonathan Doh, one of the top ranked international business faculty in the world, will discuss globalization, the changing balance of global economic power, and global opportunities in the Villanova MBA Program.

23. Inventing the future: AURP International Conference



Presenter: University City Science Center

Date: 9/24/2013 - 9/27/2013

Location: Ritz-Carlton Philadelphia, Ten Avenue of the Arts, Philadelphia, PA 19102 and The University City Science Center 3711 Market St. 8th Floor, Philadelphia, PA 19104

Cost: Varies (see Special Instructions)

Not Open to Public

Expected Audience: University researchers, science and tech park executives from around the globe

Special Instructions: Registration required at international.aurp.net

AURP is focusing on the theme of the conference, "Inventing the Future", and the important role research parks play in developing entrepreneurs, innovation and technology commercialization from university research. Research park executives attending will gain insight into the best practices and resources to support high value job creation and economic growth in their own communities. Conference highlights will include a tour of the Science Center, networking events and professional development workshops, including Research Parks 101—a full-day workshop for those new to research parks, just prior to the start of the conference.



The Philadelphia International Airport will soon offer direct international flights to destinations such as Qatar in the Middle East and Sao Paulo, Brazil. Direct flights to 38 international destinations are already available.

24. International Showcase Reception

Presenter: World Trade Center of Greater Philadelphia

Date: 9/25/2013 5:00 - 8:00pm

Location: Curtis Institute of Music, 1726 Locust St, Philadelphia, PA 19103

Cost: Varies (see Special Instructions)

Open to Public

Expected Audience: Philadelphia's Business Leaders

Special Instructions: Registration required at www.wtcphila.org

The Philadelphia International Showcase is the culminating event of The Pennsylvania International Week (PIW), which is recognized as the region's leading international networking event, bringing together the international business, diplomatic, and academic communities to "showcase" the international vitality of the region. In addition to local business leaders, government officials, and representatives from the region's economic development organizations, Pennsylvania's Authorized Trade Representatives (ATRs) from around the globe will be in attendance.

25. Global Tastes Celebration

Presenter: Nationalities Service Center

Date: 9/26/2013 6:00 - 9:00pm

Location: The Horticultural Center,
Fairmount Park, 100 N. Horticultural Dr., Philadelphia, PA 19131

Cost: \$175 VIP Ticket \$125 General

Open to Public

Expected Audience: Partners and supporters of the Nationalities Service Center

Special Instructions: Buy tickets at www.nationalitiesservicecenter.org

A celebration of Philadelphia's diverse communities and foods from around the world, inspired by the immigrants and refugees that rely on NSC daily for educational, legal and social services.

26. Performance of *Nabucco* by Giuseppe Verdi

Presenter: Consulate General of Italy & Opera of Philadelphia

Date: 9/27/2013 - 10/6/2013

Location: Academy of Music, 240 S Broad St, Philadelphia PA 19109

Cost: Varies (see Special Instructions)

Open to Public

Expected Audience: Interested audiences

Special Instructions: Buy tickets at www.operaphila.org

On its surface, *Nabucco* is about the epic struggle of Zaccaria and the Jews suppressed by Babylon's King Nebuchadnezzar and his vengeful daughter, Abigaille. But to Italians fighting for their freedom from Austria, Verdi's first great opera was an inspiring call to arms. This production celebrates the 200th anniversary of Verdi's birth. There are 5 dates for this performance: September 27, 29, October 2, 4, and 6.

27. Campus Philly College Day

Presenter: Campus Philly

Date: 9/28/2013

Location: The steps of Philadelphia Museum of Art, Benjamin Franklin Parkway, Philadelphia, PA 19101

Cost: Free

Open to Public

Expected Audience: College students

Special Instructions: Visit www.campusphilly.org for more information

College Day is Philadelphia's full day welcome to new and returning college students. Campus Philly and friends are bringing the region-wide student community together for a day of culture, music, food and Philadelphia experiences. Join us on Saturday, September 28. Meet at the steps. Meet your friends. Meet Philadelphia.

28. Turkish Delight

Presenter: Penn Museum

Date: 9/28/2013 2:00 - 8:00pm

Location: Penn Museum, 3260 South St, Philadelphia PA 19104

Cost: Free with museum admission

Open to Public

Expected Audience: Interested audiences

Special Instructions: Visit penn.museum for more information

Delight! Visitors are invited to an afternoon of pure Turkish delight! The event features Turkish dancing and music, talks on ancient and modern Turkey, an authentic cuisine demonstration, crafts, and more. This GlobalPhilly 2013 event is sponsored by the Turkish American Friendship Society of the United States and the Middle East Center of the University of Pennsylvania.

29. Arab Music Concert Series

Presenter: Al-Bustan, Seeds of Culture

Date: 9/28/2013 8:00pm

Location: Trinity Center for Urban Life, S 22nd St., Philadelphia PA 19103

Cost: Ticketed event

Open to Public

Expected Audience: General Public

Special Instructions: Visit www.albustanseeds.org for more information

Check out Al-Bustan Seeds of Culture's website for details of the fall schedule for its magnificent Arab Music Concert Series, held at Trinity Center for Urban Life (22nd and Spruce St).



Sculptor Emmanuel Fremiet created the famous statue of Joan of Arc that stands in the Place Des Pyramides in Paris; one of the few copies in the world is located in Philadelphia.

30. Teachers' History Weekend

Presenter: Foreign Policy Research Institute

Date: 9/28/2013 - 9/29/2013

Location: Loews Philadelphia Hotel, 1200 Market St., Philadelphia, PA 19107

Cost: Registration closed.

Not Open to Public

Expected Audience: Weekend Seminar is by invitation only

Special Instructions: Visit www.fpri.org for more information

Once upon a time, Philadelphia made a historic contribution to the world and to the development of Freedom. The question "Did it happen in Philadelphia by accident?" gives us an opportunity to explore what precisely happened here in the pre-revolutionary and revolution periods. To assist teachers in grappling with these issues, FPRI has assembled scholars who have made unique contributions in this field.

31. 2013 Atlas Award: A Tribute to First Responders

Presenter: World Affairs Council of Philadelphia

Date: 9/30/2013 5:30 - 9PM

Location: Loews Philadelphia Hotel, 1200 Market St., Philadelphia, PA 19107

Cost: Ticketed event

Open to Public

Expected Audience: WAC members, general public, students, sponsors

Special Instructions: Registration required at www.wacphila.org

From Hurricane Sandy to Sandy Hook, from Boston bombing to the Oklahoma tornados, this has been the year of the first responder. The World Affairs Council of Philadelphia invites you to stand with American communities as the Council presents its 2013 Atlas Award in recognition of, and gratitude to, the men and women who so bravely respond when disaster strikes. Governor of Connecticut Dannel Malloy will be accepting the award on behalf of the nation's First Responders.

32. Film Screening: Madagascar

Presenter: Geographical Society of Philadelphia

Date: 10/2/2013 2:00pm and 7:30pm

Location: Ritz East Theatre, 125 S 2nd Street, Philadelphia

Cost: \$17 GSP Members, \$20 Non-members

Open to Public

Expected Audience: General public (limited tickets available)

Special Instructions: Buy tickets at www.geographicalsociety.org

With machete in one hand and video camera in the other, Marlin Darrah traveled to Madagascar, an isolated island home to mammals, birds and plants that exist nowhere else on earth. See Darrah's documentary and hear the explorer's stories.



The Penn Relays at Franklin Field are one of the World's oldest track and field events.

33. First Thursday

Presenter: International Visitors Council

Date: 10/3/2013 5:30 - 7:30pm

Location: Courtyard Marriot, Center City, 21 N Juniper St, Philadelphia, PA 19107

Cost: Free for Members, \$15 Non-members in advance, \$20 at the door

Open to Public

Expected Audience: Global Philadelphians

Special Instructions: RSVP to alan.hatfield@phila.gov or call 215.683.0992

At International Visitors Council (IVC)'s First Thursday prime networking events, attendees can expect to meet interesting and lively people from around the world! This is guaranteed to be a friendly evening of citizen diplomacy that will create lasting and positive impressions of the U.S., Philadelphia and of attendees.

34. International Student Reception

Presenter: Penn Museum

Date: 10/4/2013 5:00 - 7:00pm

Location: Penn Museum, 3260 South St, Philadelphia PA 19104

Cost: Free

Open to Public

Expected Audience: Philadelphia's International Students

Special Instructions: Visit penn.museum for more information

Now celebrating its 44th anniversary, this free event draws nearly 1,000 students and scholars from around 85 different countries each. Held every year in the magnificent Chinese Rotunda at the Penn Museum, it is the only large-scale welcome reception of its kind in the region, drawing an ever-growing number of college and university international students to meet each other and learn about resources for multicultural education.

35. Symposium on the United States and Wars in Iraq and Afghanistan

Presenter: CENFAD (Temple University Center for the Study of Force and Diplomacy/U.S. Army War College)

Date: 10/4/2013 - 10/5/2013

Location: Temple University, Russell Weigley - Room 914 Gladfelter Hall, N 11St & W. Berks St., Philadelphia PA 19122

Cost: Free

Open to Public

Expected Audience: Students, Scholars, Informed Public

Special Instructions: Visit www.temple.edu/cenfad for more information

The Center for the Study of Force and Diplomacy (CENFAD), founded in 1993 by Drs. Richard Immerman, Russell Weigley, and David Rosenberg, fosters interdisciplinary faculty and student research on the historic and contemporary use of force and diplomacy in a global context. CENFAD is housed within Temple University's History Department. Over the years, CENFAD has invited guest speakers to give talks on issues that relate to the study of force and diplomacy.

36. "What We Sow" 70x7 The Meal

Presenter: Mural Arts Program & Studio Orta

Date: 10/5/2013

Location: Location to be announced after lottery drawing

Cost: invitational event

Not open to Public

Expected Audience: by lottery drawn on 9/7/13

Special Instructions: Visit www.muralarts.org for more information about how you can attend.

What We Sow will culminate on October 5th, 2013 with 70X7 The Meal, act XXXIV, a collaboration between Mural Arts and internationally renowned artists, Lucy + Jorge Orta. This visual and performance art piece will gather people around a communal table to engage in conversation about the issues of heirloom foods and their role in creating a healthier food system. The Meal will feature a simple menu of heirloom produce created by Chef Marc Vetri and catered by Cescaphe Event Group.

37. Philadelphia Open Studio Tours

Presenter: The Center for Emerging Visual Artists, sponsored by GPTMC

Date: 10/5/2013 & 10/6/2013 (for neighborhoods East of Broad St.) 10/19/2013 & 10/20/2013 (for neighborhoods West of Broad St.)

Location: Tours span 20 PHL neighborhoods over two weekends

Cost: The self-guided studio tours are free. The trolley tours are \$40

Open to Public

Expected audience: General Public.

Special instructions: Studio tour registration at philaopenstudios.org

This program is the largest tour of artist studios and creative workspaces in the region, and one of the premier open studio tour events in the country. Each October, the Tours span 20 unique Philadelphia neighborhoods, feature over 300 participants, engage audiences topping 30,000, and literally put Philadelphia's professional artists "on the map" for locals and tourists alike. More at: www.philaopenstudios.org

38. "Is American Politics Broken?" A Symposium about How We Run Our Elections and Govern Our Nation



Presenter: World Affairs Council of Philadelphia

Date: 10/7/2013 (Evening program)

Location: Congress Hall, 6th & Chesnut St., Philadelphia PA 10106

Cost: Varies (see Special Instructions)

Open to Public

Expected Audience: WAC members, general public, students

Special Instructions: Registration required at www.wacphila.org

Join the World Affairs Council of Philadelphia, as well as some of the nation's top speakers, to ask the important questions about American government and elections, such as, "Is it even 'worse than it looks?'" "What is wrong with the Senate and can it be fixed?" and, perhaps, most important of all, "Is American politics broken?"

39. Behind the Scenes Tour of PHL

Presenter: Philadelphia International Airport

Date: 10/9/2013 1:30pm

Location: Philadelphia International Airport Executive Office, Departures Road, Terminal D, 8000 Essington Avenue, Philadelphia, PA 19153

Not Open to Public

Expected Audience: Global Philadelphia Members Only

Special Instructions: Pre-register with Global Philadelphia Association by calling 215.851.8112

In 2012, PHL accommodated 30.2 million passengers, including 4.3 million international passengers, and handled 443,236 aircraft takeoffs and landings. Thirty airlines offer more than 600 daily departures to 124 cities, including 38 international destinations. A lucky group of GPA Members will have the chance to get to know PHL better and hear more about plans for the airport's future.

40. U.S. Open Squash

Presenter: Drexel University

Date: 10/9/2013 - 10/18/2013

Location: Drexel University's Daskalakis Athletic Center, 3315 Market St., Philadelphia, PA 19104

Cost: General admission ranges from \$20-35

Open to Public

Expected Audience: General Public

Special Instructions: Visit www.usopensquash.com for more information

The world's most elite players will return to Philadelphia in 2013 to compete in one of the top international displays of professional squash talent, the U.S. Open Squash Championships. This premier event forms part of the World Series tour for both the Professional Squash Association and Women's Squash Association. The 2013 Delaware Investments U.S. Open Squash Championships will be held from October 9-18 and once again hosted at Drexel University.

41. Full Exposure: Mekong Hotel

Presenter: International House Philadelphia

Date: 10/10/2013

Location: International House Philadelphia, 3701 Chestnut St., Philadelphia, 19104

Cost: \$9 General admission, \$7 Students/Seniors, IHP members FREE

Open to Public

Expected Audience: Greater Philadelphians interested in world culture and international cinema

Special Instructions: Visit www.ihousephilly.org for more information

Shifting between fact and fiction in a hotel situated along the Mekong River, a filmmaker rehearses a movie expressing the bonds between a vampire-like mother and daughter. This film from acclaimed director Apichatpong Weerasethakul was a selection at the Cannes Film Festival in 2012.



*America's first World's Fair was the
Centennial Exhibition in Fairmount
Park in 1876.*

42. The International Entrepreneur

Presenter: Philadelphia Bar Association's International Business Initiative (International Business Initiative)

Date: 10/10/2013 12:00pm

Location: Philadelphia Bar Association: 1101 Market Street, 11th Floor, Philadelphia, PA 19107

Cost: No charge for the conference - \$9 for lunch

Open to Public

Expected Audience: Business community, entrepreneurs, students and the public

Special Instructions: Reservations required. Call Dawn Petit at the Bar Association at 215.238.6367

This event is aimed at the global thinker whose professional ambitions and relationships go beyond one national border. Students and professionals of all kinds are encouraged to attend this event at the Philadelphia Bar Association for a serious opportunity to engage with fellow internationally-minded individuals.

43. Realizing the American Dream: An Evening with Connie Chung

Presenter: Welcoming Center for New Pennsylvanians

Date: 10/10/2013 5:00 - 7:30pm

Location: Moore College of Art, 1916 Race St, Philadelphia, PA 19103

Cost: \$75 for admission

Open to Public

Expected Audience: General Public

Special Instructions: Visit www.welcomingcenter.org/dream for more information.

A powerful force in the news industry for more than 35 years, Ms. Chung was the first Asian American and only the second woman to serve as nightly news anchor on a major TV network (the CBS Evening News). She will share the story of her family's journey to the U.S. and insight into her path to success. Individual tickets cost \$75, and VIP sponsorships cost \$1500. VIP sponsors will have the opportunity to join Ms. Chung at Four Seasons Hotel Philadelphia for dinner. Visit welcomingcenter.org/dream for additional information.



In 2014, the Philadelphia Bar Association will host the World City Bar Leaders Conference in Philadelphia, a biannual gathering of leaders and representatives of the Bars of the largest cities in the world.

44. Philadelphia Lantern Slide Salon

Presenter: Wagner Free Institute of Science

Date: 10/10/2013 5:30 – 8:00pm

Location: The Wagner Free Institute of Science, 1700 W Montgomery Ave, Philadelphia, PA 19121

Cost: Admission is Free, suggested donation of \$10 for adults, \$5 for students and seniors

Open to Public

Expected Audience: General public and library & archives audiences

Special Instructions: Visit www.wagnerfreeinstitute.org for more information

The Wagner Free Institute of Science is hosting this program, which will feature historic lantern slides from its archives for view in the salon. Six other institutions and organizations are partnering and are providing lantern slides from their collections to offer a rare experience of the past.

45. Screening of film “Girl Rising”

Presenter: Drexel University

Date: 10/10/2013 5:30pm

Location: James E. Marks Intercultural Center, 30 S. 33rd St., Philadelphia, 19104

Cost: Free

Open to Public

Expected Audience: Global Philadelphians

Special Instructions: Visit www.drexel.edu/international for more information

“Girl Rising” is a stirring documentary feature film that Drexel will be showing on campus during GlobalPhilly 2013, that comes from Academy Award-nominated director, Richard E. Robbins. The film spotlights the stories of 9 young girls from 9 countries that include Peru, Haiti, Egypt, Afghanistan, Nepal, and Cambodia.

46. Curtis Opera Theatre: The Emperor of Atlantis by Viktor Ullmann

Presenter: Curtis Institute of Music

Date: 10/10/2013 – 10/12/2013 7:30 pm & 10/13/2013 2:30 pm

Location: Curtis Opera Studio, 1726 Locust St., Philadelphia, PA 19103

Cost: Subscriptions for three Curtis Opera Theatre performances: \$75;
Single tickets: \$35

Open to Public

Expected Audience: General Public

Special Instructions: Visit www.curtis.edu for more information

The power struggle between a deluded, warring emperor and Death itself wreaks havoc on humanity—until one of them gains the upper hand—in Viktor Ullmann’s *The Emperor of Atlantis*. Sung in English, this extraordinary one-act fable was created in Theresienstadt, a Nazi concentration camp near Prague. An intimate, distilled drama staged in the black-box Curtis Opera Studio.

47. Building Global Competence through Collaborative Strategies in International Education

Presenter: PA Council for International Education

Date: 10/10/2013 - 10/12/2013

Location: Sheraton University City Hotel, 3549 Chestnut St.; Philadelphia, PA 19104

Cost: Regular rates are \$200/members; \$250 nonmembers; Early registration discounts apply if registering by September 3

Open to Public

Expected Audience: International/global education administrators, faculty, teachers at all levels, K-16; business people supporting global education, organizers involved with international visitors/students/participants

Special Instructions: Registration required at www.pacie.org

This educational event is excellent for International education administrators, faculty, teachers at all levels, K-12 and higher, in a forum with business organizations supporting global education, and organizers involved with International visitors, students, and participants. PaCIE is a network of professionals interested in advancing international education in Pennsylvania. The organization provides a forum for educators, both K-12 and at the higher education level, to share best practices, formulate advocacy goals and construct a dialogue with government agencies and actors, as well as business and non-profit organizations.

48. Ireland vs Germany World Cup Qualifying Game

Presenter: German American Chamber of Commerce of Philadelphia

Date: 10/11/2013

Location: Brauhaus Schmitz, 718 South St., Philadelphia PA 19147

Cost: \$15

Open to Public

Expected Audience: Members and young professionals

Special Instructions: Check web site globalphiladelphia.org/initiatives/globalphilly2013

Cheer loudly for your favorite team and have some rollicking good fun to warm up for the 2014 World Cup in Brazil. This event is co-hosted by the Irish American Chamber of Commerce, German Society of Pennsylvania, Irish Immigration Center, and Irish Network Philadelphia.

49. Family Matinee: The Illusionist

Presenter: International House Philadelphia

Date: 10/12/2013 2:00pm

Location: International House Philadelphia, 3701 Chestnut St., Philadelphia, 19104

Cost: \$5 General admission, IHP members FREE

Open to Public

Expected Audience: Greater Philadelphians interested in world culture and international cinema

Special Instructions: Visit www.ihousephilly.org for more information.

An acclaimed and memorable film from the last decade, "The Illusionist" artfully tells the story of an Austrian magician who uses his talents to confound audiences and evil politicians alike.

50. Verdi Nostro Contemporaneo, performed by Ensemble Nuove Musiche

Presenter: Consulate General of Italy

Date: 10/12/2013 8:00 - 9:30pm

Location: Caplan Recital Hall (University of the Arts), 320 S. Broad St., Philadelphia, PA 19102

Cost: Free

Open to Public

Expected Audience: Classical music lovers

Special Instructions: Check web site globalphiladelphia.org/initiatives/globalphilly2013

Celebrate the occasion of the 200th anniversary of Verdi's birth within the framework of "2013: Year of Italian Culture in the United States" with this event, co-presented by the Italian Consulate in Philadelphia.

51. Brazilian Hospital Administrators Seminar



Presenter: Philadelphia International Medicine

Date: 10/14/2013 - 10/18/2013

Location: Thomas Jefferson University Hospital, Temple University Hospital, Fox Chase Cancer Center

Not open to Public

Expected Audience: Hospital Administrators from Brazil

Special Instructions: Visit www.philadelphiamedicine.com for more info

Between 20 to 25 Brazilian hospital administrators will spend a week in Philadelphia in October 2013 for an agenda that includes two days at Thomas Jefferson University Hospital, two days at Temple University Hospital and one day at Fox Chase Cancer Center. The program includes opportunities for the Brazilians to tour PIM hospital facilities, labs, pharmacies, etc. and opportunities for the Philadelphians and Brazilians to socialize.

52. Corporate Event for Members of the Swedish-American Chamber of Commerce

Presenter: Swedish-American Chamber of Commerce – Philadelphia

Date: 10/15/2013 7:00 - 9:00pm

Location: Wells Fargo Center, 3601 S. Broad St., Philadelphia, PA 19148

Not open to Public

Expected Audience: SACC Members and young professionals

A corporate sports event for SACC Philadelphia members. For more details, contact SACC Philadelphia : 215.790.3785. www.sacc-philadelphia.org



*Lech Wałęsa, former President
of Poland, was the first recipient of
Philadelphia's Liberty Medal.*

53. Richard Wiggin, author of the book, **Embattled Farmers: Soldiers from Lincoln, MA.**



Presenter: Friends of Independence National Historical Park

Date: 10/16/2013 7:00pm

Location: The Benjamin Franklin Museum located in Franklin Court. Entrance is from Market or Chestnut Streets, between 3rd and 4th Streets, Phila, PA 19106

Cost: \$10 Members, \$15 Non-members

Open to Public

Expected Audience: General Public, history enthusiasts

Special Instructions: Visit www.friendsofindependence.org for more info

Meticulously researched, *Embattled Farmers* traces the footsteps of 252 individual men—all connected with the same community—who served as Patriot soldiers during the Revolutionary War. Collectively, their stories present a fascinating mosaic of a community at war. Join author Richard Wiggin for this event to hear an expert's understanding of the lives of civilians who fought for their ideals 230 years ago.

54. World Food Day 2013: Global Perspectives on Food Justice

Presenter: UPenn's Africa Center, Middle East Center, Center for East Asian Studies and South Asia Center; and United Nations of Greater Philadelphia, Rutgers School of Social Work; School of Social Work Student Association (SSWSA)

Date: 10/16/2013 4:00 - 6:00pm

Location: Rutgers Camden Campus, 411 Cooper St., Camden, NJ 08102

Cost: Free

Open to Public

Expected Audience: General Public

Special Instructions: Check web site globalphiladelphia.org/initiatives/globalphilly2013/events

The World Food Day theme for 2013 is "sustainable food systems for food security and nutrition." Speakers will shed light on perspectives and strategies for food justice outside of the US. This event is part of the Rutgers Global Health Biennial Theme Year.



Nobel Peace Prize winner and former Secretary of State Henry Kissinger was one of the Foreign Policy Research Institute's early scholars.

55. "Demon" – Classical Russian poem about Georgia with English translation

Presenter: Russian Mosaica Heritage Festival & Poetry Theater of Rustem Galitch

Date: 10/16/2013 8:00 - 10:00pm

Location: First Unitarian Church, 2125 Chestnut St., Philadelphia, PA 19103

Cost: \$20 per adult, \$15 per student/retiree.

Open to Public

Expected Audience: Russian-speaking population of the Greater Philadelphia, students of Russian language, poetry and theater-lovers.

Special Instructions: Visit www.mosaicafestival.com for more information

A theatrical production of "Demon," a classical Russian poem about Georgia with English translations, with organ, signing, and light photography. The mission of the Russia Mosaica Heritage Festival is to find, teach, develop and enrich cultural heritage of Philadelphia's Russian-speaking community.

56. 50th Anniversary Celebration

Presenter: University City Science Center

Date: 10/17/2013 6:00pm - 9:00pm

Location: Hotel Monaco Philadelphia, 433 Chestnut St, Philadelphia PA 19106

Not open to Public

Expected Audience: Members of the business community

Special Instructions: Visit www.sciencecenter.org for more information

What do nylon stockings, the geodesic dome and the rabies vaccine have in common? All were discovered or developed by innovators with a connection to the Greater Philadelphia region! The University City Science Center is celebrating innovation in the STEAM sectors of Science, Technology, Engineering, Art and Math with an Innovators Walk of Fame. Join the UCSC as the first "class" is announced at the Science Center's 50th Anniversary Celebration Oct. 17 at Philadelphia's Hotel Monaco.

57. Penn Film Premiere: African Independence



Presenter: Penn Museum

Date: 10/17/2013 4:30pm - 6:30pm

Location: Penn Museum Harrison Auditorium, 3260 South St, Phila, PA 19104

Cost: Free with museum admission

Open to Public

Expected Audience: General Public

Special Instructions: Visit penn.museum for more information



African Independence, a feature length documentary written, directed, and produced by University of Pennsylvania professor and PBS' History Detectives host Tukufu Zuberi, has won awards and kudos internationally since its January premiere. The film explores the epic, evolving story of Africa today, told through the lens of four watershed events—World War II, the end of colonialism, the Cold War, and the era of African Republics—which have redefined a continent once wracked by enslavement and shaped by European colonization.



Map of Center City Philadelphia

 Hotel	Transportation Routing:
 Building	 SEPTA Transit Station
 Park	 Airport Train
 Parking Facility	 Market / Frankford Line
 Visitor Center	 Broad Street Line
 Hospital	 Subway / Surface Line
 Place of Worship	 PATCO Line

HISTORIC AREA INDEX

 MUSEUM	 HISTORIC
A. New Hall Military Museum	1. Independence Hall
B. Free Quaker Meeting House Museum	2. Congress Hall
C. National Liberty Museum	3. Old City Hall
D. National Museum of American Jewish History	4. Philosophical Hall
E. Chemical Heritage Foundation Museum	5. Library Hall
	6. Second Bank of the U.S.
	7. Franklin Court
	8. Carpenters' Hall
	9. Todd House
	10. First Bank of the U.S.
	11. Bishop White House
	12. Christ Church Burial Ground & Franklin's Grave

AIRPORT & SPORTS COMPLEX



©1991-2013 PCVB & C.C. Salvatico, GISP, Rev. 8/13

Airport & Sports Complex Key

1. Comfort Inn Philadelphia Airport
2. Embassy Suites Philadelphia Airport
3. Hilton Philadelphia Airport
4. Holiday Inn Express Philadelphia Airport
5. Holiday Inn Philadelphia Stadium
6. Philadelphia Airport Marriott
7. Renaissance Philadelphia Airport
8. Residence Inn Philadelphia Airport
9. Sheraton Suites Philadelphia Airport
10. The Clarion Hotel & Conference Center
11. Wyndham Garden Hotel Philadelphia Airport

58. Naturalization Ceremony Welcoming New United States Citizens

Presenter: Philadelphia Bar Association

Date: 10/17/2013 10:30am

Location: National Constitution Center, 525 Arch St., Philadelphia, PA 19106

Not open to Public

Expected Audience: New citizens and their family members

Special Instructions: Visit www.philadelphiabar.org for more information

Presented by the U.S. District Court for the Eastern District of Pennsylvania, this Naturalization Ceremony will welcome to U.S. citizenship nearly 100 individuals from a wide range of countries. U.S. District Court Judge Joel Harvey Slomsky will preside over the ceremony. Charisse R. Lillie, Esq., Vice President, Community Investment at Comcast Corporation and President of Comcast Foundation, will be the Distinguished Guest Speaker, and Philadelphia Bar Association Chancellor Kathleen D. Wilkinson will offer remarks, among other guest speakers. The National Society of The Colonial Dames of America in the Commonwealth of Pennsylvania will present a parade of flags in the courtroom representing the first colonies of our nation.

59. 2013 Celebration of Interdependence

Presenter: Global Interdependence Center

Date: 10/18/2013

Location: The Rittenhouse Hotel, 210 W Rittenhouse Sq, Philadelphia, 19103

Cost: \$200-\$5000 (see Special Instructions)

Open to Public

Expected Audience: Global Philadelphians

Special Instructions: Registration required at www.interdependence.org

Join the GIC for this year's Celebration of Interdependence fundraiser, honoring Ghana and featuring a silent auction and dinner stations. GIC's mission is to encourage the expansion of global dialogue and Free trade in order to improve cooperation and understanding among nations, with the goal of reducing international conflicts and improving worldwide living standards.

60. Philly Photo Day

Presenter: Philadelphia Photo Arts Center, sponsored by GPTMC

Date: 10/18/2013

Location: City of Philadelphia

Cost: Free

Open to Public

Expected audience: General Public.

Special instructions: Photos must be submitted online through the Philly Photo Day website www.philaphotoarts.org

On Friday, October 18, the entire city celebrates Philly Photo Day. On that day everyone in the city is invited to take a photograph and submit it to be included in a vast exhibition, featuring thousands of images to create an immense portrait of Philadelphia. Every photograph submitted will be printed and displayed in the exhibition from November 14 – December 28. Everyone is welcome to submit a photograph on Philly Photo Day!

Note: Photos must be taken within the city of Philadelphia on October 18.

61. Emerson Quartet

Presenter: Philadelphia Chamber Music Society

Date: 10/18/2013 8:00pm

Location: Perelman Theater, Kimmel Center, 300 S. Broad St, Philadelphia, 19102

Cost: \$24

Open to Public

Expected Audience: General public, classical music enthusiasts

Special Instructions: Buy tickets at www.pcmsconcerts.org

The Emerson String Quartet stands apart in the history of string quartets with an unparalleled list of achievements over three decades: more than thirty acclaimed recordings, nine Grammy's® (including two for Best Classical Album), three Gramophone Awards, the Avery Fisher Prize, Musical America's "Ensemble of the Year", and collaborations with many of the greatest artists.

62. Week of Italian Language

Presenter: Consulate General of Italy, University of Pennsylvania – Center for Italian Studies, Italian American Society of Philadelphia

Date: 10/18/2013 - 10/28/2013

Location: Temple University (exact location TBD)

Cost: Free

Open to Public

Expected Audience: Students, professor and people interested in the research on cancer that Prof. Antonino Giordano, an Italian-American scientist, is leading at Temple University.

Special Instructions: Check web site globalphiladelphia.org/initiatives/globalphilly2013/events

This week of events is part of the ongoing celebration of 2013 as the year of Italian culture. Enjoy the academic and cultural events in which Italiano is the major attraction.

63. Annual Community Event and Middle East Drum Ensemble

Presenter: Independence Charter School

Date: 10/19/2013

Location: Independence Charter School, 1600 Lombard Street, Philadelphia, 19146

Cost: Free

Open to Public

Expected Audience: School families, neighbors, general public

Special Instructions: Visit www.independencecharter.org for more info

Independence Charter School (ICS) is a community-oriented public K-8 charter school located in Center City Philadelphia. ICS provides its students with an intellectually stimulating and internationally focused curriculum emphasizing the arts, languages, and world cultures.



King Charles II granted William Penn a tract of land in the New World as payment for a debt. That land became Pennsylvania.

64. Curtis Symphony Orchestra: The Jack Wolgin Orchestral Concerts

Presenter: Curtis Institute of Music

Date: 10/20/2013 3:00pm

Location: Kimmel Center for the Performing Arts, 300 S. Broad St, Philadelphia, 19102

Cost: Varies (see Special Instructions)

Open to Public

Expected Audience: General public, classical music enthusiasts

Special Instructions: Visit www.curtis.edu for more info or call 215.893.1999

The Curtis Symphony Orchestra celebrates the centenary of Stravinsky's *Le Sacre du Printemps* (Rite of Spring) in the opening concert of a Russian-inflected season. Alumnus Michael Stern leads a program which includes the ballet score that provoked Parisian audiences in 1913 and still sounds fresh, invigorating, and revolutionary today. Conducting fellow Kensho Watanabe is also featured.

65. Young Americans: A Children's Naturalization Ceremony

Presenter: Welcoming Center, Please Touch Museum, USCIS

Date: 10/21/2013 5:00 - 6:30pm

Location: Please Touch Museum, 4231 Avenue of the Republic, Philadelphia, 19131

Not open to Public

Expected Audience: Invited children and their families

United States Citizenship and Immigration Services joins with the Welcoming Center for New Pennsylvanians and the Please Touch Museum for this important ceremony that will see 60 children under the age of 14 become Naturalized. This event recognizes and celebrates a new generation of Americans who will be part of our nation's future as the most ethnically and culturally diverse country in the world.

66. 21st Century Cities – Part IV of a videoconference series between Philadelphia and Mexico City on urban water management issues

Presenter: Global Education Motivators

Date: 10/22/2013 4:00 - 5:30pm

Location: School of the Future, 4021 Parkside Ave, Philadelphia, PA 19104

Cost: Free with pre-registration

Open to Public

Expected Audience: Educators and water management specialists

Special Instructions: Visit www.gem-ngo.org for more information

The program is part of the City21 series developed as a UN Academic Impact initiative using institutions of higher learning to support community initiatives on water and ecological design. This school to school videoconference is a community event that is run by students from the School of the Future in Philadelphia and Colegio Carol Baur in Mexico City. Both schools are green schools and do work in school and/or in their community on sustainable uses of water. Each school will have a formal presentation that is followed by a community to community discussion.

67. Jeffrey Khaner, flute and Charles Abramovic, piano

Presenter: Philadelphia Chamber Music Society

Date: 10/22/2013 8:00pm

Location: Settlement Music School, 416 Queen Street, Philadelphia, PA 19147

Cost: \$18

Open to Public

Expected Audience: General public, classical music enthusiasts

Special Instructions: Buy tickets at www.pcmsconcerts.org

This performance features a free pre-concert lecture starting at 6:45 PM with Jan Krzywicki. Canadian-born flutist Jeffrey Khaner has been Principal Flute of the Philadelphia Orchestra since 1990. A noted soloist, Mr. Khaner has performed concerti with orchestras throughout the United States, Canada and Asia. Pianist Charles Abramovic has won critical acclaim for his international performances as soloist, chamber musician and collaborator with leading instrumentalists and singers.

68. Open House at Chamounix Mansion

Presenter: Chamounix International Hostel

Date: 10/23/2013 5:00 - 8:30pm

Location: Chamounix Mansion, West Fairmount Park, 3250 Chamounix Drive, Philadelphia, PA 19131

Cost: Free

Open to Public

Expected Audience: Tourism specialists, Fairmount Park users, students, general public

Special Instructions: Call 215.878.3676 for more information

Two Hundred years ago Chamounix Mansion was the summer retreat of the Plumstead family; 100 years ago the Mansion served as the clubhouse for the Quaker City Motor Club which promoted automobile racing along the adjacent Chamounix Speedway. In 1964, Chamounix became the first metropolitan youth hostel in America. Today, the restored Chamounix and Carriage House continue to serve as an International Hostel and Meeting Center. Come share the welcome of Chamounix, an extraordinary Fairmount Park destination.



*In 1695, the Welsh Quakers
built the oldest house of worship
in Pennsylvania, located on
the Main Line—Merion Friends
Meeting House.*

69. A Celebration of Ned Rorem's 90th Birthday

Presenter: Curtis Institute of Music

Date: 10/23/2013 8:00pm

Location: Field Concert Hall, Curtis Institute, 1726 Locust St., Philadelphia, 19103

Cost: Subscriptions for Curtis Presents, 4 concert series: \$95. Single tickets: \$28

Open to Public

Expected Audience: General public, classical music enthusiasts

Special Instructions: Call Curtis Patron Services Office at 215.893.7902 or visit www.curtis.edu.

The Curtis Opera Theatre, under the direction of Mikael Eliassen, gave the Philadelphia premiere of Evidence of Things Not Seen in 1997 and recorded it for Albany Records in 2003. To celebrate the composer's 90th birthday, they reprise this epic song cycle by Ned Rorem ('44), Curtis emeritus faculty.

70. Global Citizenship in Action: Peace and Social Justice for a Sustainable Future

Presenter: Project for Nuclear Awareness, United Nations Association of Greater Philadelphia, Global Securities Institute

Date: 10/24/2013 3:00 - 5:00pm

Location: Philadelphia Meeting House, 4th & Arch St., Philadelphia, PA 19106

Cost: Free

Open to Public

Expected Audience: Limited seating; teachers, faculty, principals or club leaders please register as soon as possible

Special Instructions: Email Christiaan Morssink Morssink@una-gp.org or Arushi Kohli at ak949@drexel.edu or Caroline DiStefano at Caroline.unagp@gmail.com

Celebrating the 70th Anniversary of the UN Association (1943-2013). This symposium is part of a series of events, organized in collaboration with the Global Securities Institute, and the Project for Nuclear Awareness. This session will focus on disarmament issues and will include the Haas Peace Award by PNA. **SPEAKERS:** Dr. Julia Sullivan, CEO and Founder of IFESH (ifesh.org), Gillian Sorensen, Senior Advisor at the UN Foundation (UNFoundation.org).

71. Peace Award Ceremony: Disarmament in Light of Humanitarian Need

Presenter: Project for Nuclear Awareness & United Nations Association of Greater Philadelphia

Date: 10/24/2013, Evening

Location: Monthly Meeting of Friends of Phila, 4th & Arch St., Philadelphia, 19106

Cost: \$50 (student cost \$25)

Open to Public

Expected Audience: All people concerned about nuclear disarmament and economic justice including students, academics, clergy, journalists, non-profit, public and private sector professionals.

Special Instructions: Registration required at info@pnausa.org

PNA and UNAGP host an evening cocktail reception and a celebratory awards ceremony for the John C. & Chara C. Haas Award for International Peace and Social Justice and the Eisendrath Award for Youth Advocacy in Nuclear Disarmament with distinguished guest speaker, Dr. Julie H. Sullivan, President of the IFESH. This year's Haas Award will be given to Dr. Joseph Gerson, Director of Peace and Economic Security Program at the AFSC.

72. 2013 GPLEX: Innovation and Collaboration Around Shared Agendas

Presenter: Economy League of Greater Philadelphia

Date: Thursday, October 24 – 12:00pm; Friday, October 25 – 8:00pm

Location: Various

Cost: Registration closed

Not Open to Public

The Economy League of Greater Philadelphia will gather for 1 and 1/2 days of learning and networking with a cohort of emerging and established leaders from diverse sectors, industries, and counties. The first day features a welcome luncheon followed by Regional Explorations and then return to Philadelphia for informal dinners. The program continues the second day with a mix of engaging speakers and panels plus interactive discussions. More information is available at www.economyleague.org/gplex/2013.

73. History conference “Ligaments: Everyday Connections for Colonial Economies”

Presenter: The Library Company

Date: 10/24/2013 - 10/25/2013 5:00pm - 7:00pm

Location: The Library Company, 1314 Locust St., Philadelphia, PA 19107

Cost: Free

Open to Public

Expected Audience: General public, global history enthusiasts

Special Instructions: Visit www.librarycompany.org for more information

How did ordinary colonial people accomplish the daily buying and selling, producing and exchanging, that sustained their households? How did colonial traders put a ship of goods together, protect goods moving into foreign Atlantic empires, and communicate effectively with strangers during the early modern era? The conference will explore these and other connective sinews of skill and knowledge among colonists of all classes and cultures across European empires.

*The Benjamin Franklin Parkway
has the most cultural museums and
attractions per square foot than any
other city in the world.*



74. Keeping the Promise: Empowering Youth for Peace and Sustainable Development

Presenter: Global Education Motivators

Date: 10/25/2013 9:30am – 2:00pm

Location: Chestnut Hill College (E. Parlor), 9601 Germantown Ave., Phila, PA, 19118

Cost: \$15 for students (including resources and lunch)

Not open to Public Public welcome for the Opening and Closing Ceremonies only at 9:30-11am and 1-2:00pm.

Expected Audience: Educators, students and human rights advocates

Special Instructions: Visit www.gem-ngo.org for more information

This is a School Celebration of the United Nations and Human Rights (Grades 8-12). In a Words to Deeds format students are encouraged to be engaged in the global process of making the world a better place. They will explore the future they want from a human rights and human development perspective and see the importance of students being part of the solution to having a better world for everyone. They are given an opportunity to be involved with the UN and their global peers during the 2013-2014 school year.

75. The Head of the Schuylkill Regatta

Presenter: The Head of the Schuylkill Regatta, sponsored by GPTMC

Date: 10/26/2013 - 10/27/2013

Location: Fairmount Park along Kelly Drive. The best place for spectators is the Three Angels Statues (just one mile north of Boathouse Row on Kelly Drive).

Cost: FREE for spectators

Open to Public

Expected audience: General Public.

Special instructions: Rowers wishing to participate must register at: www.regattacentral.com

The Head of the Schuylkill Regatta is one of the nation's premier rowing events that occurs annually in Philadelphia, a location that is regarded as the home of American rowing. 6,500+ athletes are expected to cross the finish line of the 2.5-mile scenic course. More than 150 high schools and colleges hailing from Massachusetts to northern Virginia areas will participate along with colleges, universities and high schools from across Philadelphia and New Jersey. This year scholastic and masters crews from Europe are on board and excited to compete in Philadelphia. College crews race on Saturday along with the majority of elite and masters rowers, while high schools, and other elite, masters and veteran rowers race on Sunday. Spectators line the banks of the 2.5-mile course to cheer on their favorite team and enjoy the festive atmosphere that includes food, music, retail vendors and two full days of top rowing competition. Visit www.hosr.org for more information.



Pope John Paul II celebrated Mass for about 150,000 people in Philadelphia in 1979.

76. Lecture by Dr. Peter Gleick: Global Water Challenges, Issues and Solutions

Presenter: Fairmount Water Works Interpretive Center

Date: 10/25/2013 5:30-9:00pm

Location: Philadelphia Museum of Art, Benjamin Franklin Parkway, Philadelphia, PA 19101

Cost: For the lecture: \$55 (\$40 for students with ID and Young Professionals age 40 and under). For the reception: \$15

Open to Public

Expected Audience: Professionals, educators, students and water management specialists

Special Instructions: Visit www.fairmountwaterworks.org for more information

Dr. Peter Gleick is a leading expert, innovator, and communicator on water and climate issues. He co-founded and leads the Pacific Institute --an independent NGO in the fields of water/economic/environmental justice and sustainability. Join the dialogue at 5:30 on Friday, October 25, as Dr. Gleick presents his views on Global Water Challenges, Issues and Solutions at the Philadelphia Museum of Art. Reception to follow at the Fairmount Water Works Interpretive Center.

77. Day of the Dead Altar

Presenter: Mexican Cultural Center & Mexican Consulate

Date: 10/30/2013 - 11/6/2013

Location: Penn Museum, 3260 South St., Philadelphia PA 19104

Cost: The Penn Museum has a general admission charge but discount coupons will be posted days before the event.

Open to Public

Expected Audience: General Public

Special Instructions: Visit www.mexicanculturalcenter.org for more info

The Exhibit will be shown from October 30 to November 6. The main event celebration with multiple activities and performances will take place on Saturday, November 2nd. Come be part of the observance of this major holiday in Philadelphia, and experience an authentic Dia de los Muertos.

78. Talk by Nicholas Basbanes on his book: 'On Paper: The Everything of Its Two-Thousand-Year History'

Presenter: The Library Company & The American Philosophical Society

Date: 10/30/2013 5:30-7:30pm

Location: Benjamin Franklin Hall, 427 Chestnut St, Philadelphia, PA, 19139

Cost: Free

Open to Public

Expected Audience: General Public

Special Instructions: Registration required at www.amphilsoc.org

Nicholas Andrew Basbanes has written a thoroughgoing chronicle about the stuff books are traditionally made of: paper. He starts with its invention in China 1800 years ago, considers its use for everything from currency to the blueprints that facilitated the Industrial Revolution, and records a visit to the National Security Agency, where 100 million secret documents have been pulped and recycled as pizza boxes.

79. Cross-Country Conversation with Students

Presenter: Drexel University

Date: 10/30/2013 12:00 – 1:30pm

Location: James E. Marks Intercultural Center, 30 S. 33rd St., Philadelphia, PA 19104

Cost: Free

Open to Public

Expected Audience: Educators, students and global citizens

Special Instructions: Visit www.drexel.edu/international for more info. Drexel's Office of International Programs will hold one of its regular conversations that bring together international students and domestic students to engage in dialogue on a pressing international topic. This conversation will be on the topic of music and its role in bridging cultural and linguistic divisions. The event will include a faculty moderator from Drexel's Music Industry Program in the Westphal College of Media Arts and Design and a panel of students from different countries.

80. Pediatric Global Health Conference: Violence Against Children

Presenter: Children's Hospital of Philadelphia

Date: 11/1/2013

Location: CHOP – Colket bldg, 3501 Civic Center Blvd., Philadelphia, PA 19104

Cost: \$50 and \$200 - refer to website

Open to Public

Expected Audience: Physicians, nurses, allied health professionals, students

Special Instructions: Registration required at chop.edu/cme

Violence occurs in every country in the world, has devastating effects on the health and well-being of children, and negatively affects their ability to learn and their social and emotional development. Violence is often deeply rooted in cultural, economic and social practices and inhibits the potential for children to contribute to society. Through expert faculty presentations, a keynote address and interactive panel discussions, this conference will provide conference attendees opportunities to understand the global reality and response to violence against children. Tools for clinicians working with children exposed to violence will also be explored.

81. Lecture with Dr. Therese Dolan – Keeping Up Appearances: Fashion and Impressionism

Presenter: Alliance Française

Date: 11/1/2013 6:30pm

Location: Cosmopolitan Club, 1616 Latimer St, Philadelphia, PA 19103

Cost: \$25 for AF Members and \$30 for Non-members

Open to Public

Expected Audience: General public and Francophiles

Special Instructions: Visit www.afphila.com for more information

The Impressionist painters in Paris launched a new style that sought above all to capture the fleeting appearances of modern life. Manet, Monet, Renoir Degas and Morisot depicted modern women sitting in cafes, dancing at chic soirées, strolling the newly renovated boulevards...This lecture will study the theoretical literary and art historical aspects of Parisian fashion and its impacts on the arts. Dr. Dolan is an art historian who specializes in 19th century French arts and published books on contemporary arts.

82. Tim Fain, violin and Pei-Yao Wang, piano

Presenter: Philadelphia Chamber Music Society

Date: 11/1/2013 8:00pm

Location: Kimmel Center, 300 S. Broad St, Philadelphia, PA, 19102

Cost: \$24

Open to Public

Expected Audience: General public, classical music enthusiasts

Special Instructions: Buy tickets at www.pcmsconcerts.org

With his adventuresome spirit and vast musical gifts, violinist Tim Fain has emerged as a mesmerizing new presence on the music scene. The charismatic young violinist was recently seen on screen and heard on the soundtrack of the film *Black Swan*. Born in Taipei, Taiwan, Pei-Yao Wang was the youngest pianist ever to receive the overall First Prize in the Taiwan National Piano Competition, at the age of eight. Four years later, she was invited to study at The Curtis Institute of Music, where she worked with Seymour Lipkin and Institute Director Gary Graffman.



Founded in 1910, International House Philadelphia became the first international house in what is now a network of over 20 international houses around the world.



Lithuanian Presidency of the Council of the European Union 2013

In celebration of Lithuania's presidency of the Council of the European Union in the second half of 2013, the Lithuanian Embassy in Washington and the Honorary Consulate of Pennsylvania are pleased to present these events of the Lithuanian Festival 2013.

Contemporary Lithuanian Children's Book Illustration Exhibit

Date: All September

Location: Friends Select School, 17th and Benjamin Franklin Parkway, Philadelphia, PA 19103

Cost: Free admission

Special Instructions: Hours: Weekdays 9 AM – 5 PM; Saturdays 11 AM – 3 PM and by appointment: 215.561.5900 or contact Lynda Greenwade Thorp lyndat@friends-select.org

Contemporary Lithuanian Children's Book Illustration features the work of 11 international award-winning illustrators, entertaining for all cultures and ages.

Cinematic Inclusions: Documentary Films from 20th Century Lithuania

Date: Thursday, September 19, 7 PM

Location: International House, 3701 Chestnut Street, Philadelphia, PA 19104

Cost: Free admission, RSVP required at www.ihousephilly.org

The seven short films that comprise Cinematic Inclusions are highlights of 20th century award-winning Lithuanian documentary cinema, all celebrating everyday heroes and everyday life.

Bishop John J. McIntyre Visits St. Andrew's Lithuanian Church

Date: Sunday, September 22, 10:30 AM Lithuanian Mass, reception to follow

Location: 19th and Wallace Streets, Philadelphia, PA 19130

Cost: Free admission, all faiths welcome

St. Andrew's Lithuanian Roman Catholic Church was established in 1924. With Father Peter Burkauskas as pastor, the church now serves the greater Philadelphia Lithuanian American community as well as Roman Catholics in the Art Museum area.

Living Foods Workshop

Date: Saturday, October 26, Noon to 3 PM

Location: Loreta's Living Foods, 1291 Wisteria Drive, Malvern, PA 19135

Cost: \$75 per person; reservations required, call 610.648.0241 or email lvainius@aol.com

The modern day living foods movement was founded by the late, Lithuanian born Ann Wigmore, and is growing in popularity around the world. Main Line resident Loreta Vainius is one of the foremost authorities today on the living foods lifestyle, and teaches internationally about organic, raw, fermented, and sprouted living foods.

"Mugė" Lithuanian Community Fair

Date: Saturday, November 2, Noon to 9 PM & Sunday, November 3, Noon to 6 PM

Location: Lithuanian Music Hall, 2715 East Allegheny Ave., Philadelphia, PA 19134

Cost: Tickets can be purchased at the door, \$5 adults and children under 12 free; for info, call 215.739.4831

The annual “Mugė” Lithuanian Community Fair is organized by the Lithuanian American Community and features vendors selling handmade memorabilia, traditional savories and sweets, live music, and games for children.

Lithuanian Dinner with Guest Chef Michael Laiskonis

Date: Wednesday, November 6. Reservations accepted from 5 PM to 10 PM

Location: Sbraga, 440 South Broad Street, Philadelphia, PA 19146

Cost: \$75 per person for 5 course prix fixe; reservations required, please call: 215.735.1913

Award winning chefs join creative forces to present a Lithuanian inspired contemporary menu. Kevin Sbraga of the eponymous Sbraga restaurant welcomes guest chef Michael Laiskonis.

Contemporary Lithuanian Photography Lecture by Eglė Deltuvaitė

Date: Thursday, November 7, 6 PM

Location: The Print Center, 1614 Latimer Street, Philadelphia, PA 19103

Cost: Free and open to the public; reservations can be made by contacting Eli VandenBerg at 215.735.6090 x1 or evandenberg@printcenter.org

Lithuania has a vibrant and flourishing photographic culture, embodying European sensibilities of inclusiveness and experimentation, and Eglė Deltuvaitė is one of the foremost photography experts in Lithuania. This is the first time that this lecture on Lithuanian photography will be given in the US.

Lithuanian Cooking Class with Michael Laiskonis

Date: Thursday, November 7, 7 PM

Location: COOK, 253 South 20th Street. Philadelphia, PA 19103

Cost: \$145 per person (includes class, dinner, and beverage pairings); reservations required and can be made online at www.audreyclairecook.com or 215.735.COOK

Philadelphia’s premier cooking school COOK, in partnership with Philadelphia Magazine and FOOB00Z, welcomes international award winning chef Michael Laiskonis as a special guest chef preparing and sharing a Lithuanian inspired dinner. Menu: Borscht, Traditional and “Deconstructed”; Herring with Smoked Potato, Pickled Parsnip and Carrot; Savory Lamb Dumpling “Cepelinai”; Poppy Seed Beignet “Spurgos” with Huckleberry, Crème Fraiche Sorbet

The Philadelphia Museum of Art Craft Show featuring Lithuanian Guest Artists

Date: Thursday, November 7, and Friday, November 8, 11 AM to 9 PM; Saturday, November 9, 10 AM to 6 PM; Sunday, November 10, 10 AM to 5 PM

Location: The Pennsylvania Convention Center, 1101 Arch Street, Philadelphia, PA 19107

Cost: Tickets in advance, online at www.pmacraftshow.org; and at the door \$15 per person

The Philadelphia Museum of Art Craft Show is one of the largest and most highly regarded professional craft shows in the world. Alongside 195 of the finest American artists, this year, for the first time, 23 Lithuanian international award-winning artists will exhibit their work. This is the first time a show of Lithuanian crafts and design of this scope has been presented in the United States. Lithuanian Artists: in ceramics: Daiva Ložytė, Nomeda Marčėnaitė, Dainius Strazdas, Rūta Šipalytė; in textiles: “Baltos Kandys” or “White Moths” Artistic Group Danguolė Brogienė, Severija Inčirauskaitė-Kriaunevičienė

Indra Dovydenaitė; in jewelry: Ugnė Blažytė and Danas Tamašauskas, Laura Dailidėnienė, Tadas Deksnys, Ingrida Didika, Darius Gerlikas, Sandra Malaškevičiūtė, Šarūnė Vaitkutė and Dainius Narkus; in glass: Viktoras Dailidėnas, Remigijus Kriukas, Lina Austė; in leather: Virginija Dalia, Marija Šaulauskaitė, Aušra Petroškienė; in paper: Klaidas Navickas; in furniture: Indra Marcinkevičienė.

Handcrafted Beer Tasting

Date: Friday, November 8, 7 PM to 8:30 PM

Location: The Pennsylvania Convention Center, 1101 Arch Street, Philadelphia, PA 19107

Cost: \$45 per person, includes admission to the Craft Show, advance reservations required and can be made online at www.pmacraftshow.org or call 215.684.7930

Join in the ultimate beer aficionado experience. Don Russell (aka Joe Sixpack), Executive Director of Philly Beer Week, freshly returned from a beer tour of Lithuania, has curated local and Lithuanian brews that cannot be found together anywhere!

Kestutis Vaiginis Quintet Lithuanian Jazz Concert

Date: Friday, November 8, 5:45 PM to 6:45 PM & 7:15 PM to 8:15 PM

Location: The Philadelphia Museum of Art, 2600 Benjamin Franklin Parkway, Philadelphia, PA 19130

Cost: Free with museum admission (museum admission: \$20 for adults, \$18 for seniors (65+), \$14 for students (with valid ID) and youth (ages 13-18), free for members and children (12 and under); tickets can be purchased at the museum

Kęstutis Vaiginis is arguably one of the most talented internationally applauded jazz musicians of his generation, playing soprano and tenor saxophones as well as the flute. Playing in his quintet are David Berkman, piano; Alex Sipiagin, trumpet; Ed Howard, bassist; and McClenty D. Hunter Jr., drums.

Meet the Artists

Date: Saturday, November 9, 7:30 PM to 10 PM

Location: The Lithuanian Consulate, 410-412 S 16th Street, Philadelphia, PA 19146

Cost: \$20 per person, advance reservations required and attendance is limited (no tickets sold at the door), please contact l.kucas@att.net or call 610.496.8146

The Lithuanian American Community of Philadelphia is pleased to welcome the 23 acclaimed artists from Lithuania who are exhibiting at the Philadelphia Museum of Art Craft Show. These artists serve as cultural ambassadors for their country, and are feted this evening for their extraordinary dedication and achievements.

Lithuanian Jewish Heritage Symposium

Date: Sunday, November 10, Noon to 5 PM

Location: National Museum of American Jewish History, 101 S. Independence Mall East, Philadelphia, PA 19106

Cost: Free and open to the public, reservations required and can be made by contacting Rolandas.kacinskas@urm.lt or calling 202.234.5860

This conference offers insights into Lithuanian Jewish culture, seeks to throw light on losses during World War II, and attempts to assess conditions for preserving and reviving Jewish heritage in today's Lithuania and among Lithuanian Jews worldwide. This event is organized by the Lithuanian Embassy, the Israeli Consulate, the American Jewish Committee and the National Museum of American Jewish History. Scholars from Lithuania and the USA will be presenting.

Sponsor



PHLCVB

Philadelphia Convention & Visitors Bureau

discoverPHL.com

The Philadelphia Convention & Visitors Bureau (PHLCVB), a private, nonprofit membership corporation, is the official Tourism Promotion Agency for the City of Philadelphia globally and the primary sales and marketing agency for the Pennsylvania Convention Center. We are an Economic Engine for the city, creating jobs and fueling the economy by bringing meetings, conventions and travelers to Philadelphia.



Jack Ferguson
President & CEO

Danielle Cohn
*Vice President of
Marketing &
Communications*



Brian Said
*Executive Director of
Tourism Division*

Sponsor

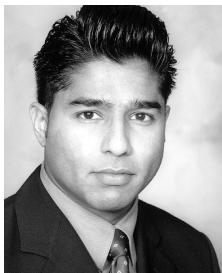
ReedSmith

Reed Smith—a global law firm with 25 offices throughout the United States, Europe, Asia and the Middle East—represents many of the world’s leading companies in complex litigation and other high-stakes disputes, cross-border and other strategic transactions, and crucial regulatory matters. To learn more: www.reedsmith.com



Gregory B. Jordan
Global Managing Partner

Ajay Raju
*Managing Partner,
Philadelphia &
Wilmington Offices*



Michael Czerpak
*Director of Northeast
Operations*

Sponsor

RADIAN

Headquartered in Philadelphia, Radian connects lenders, homebuyers, investors and loan servicers using a suite of private mortgage insurance and related risk management products and services.

www.Radian.biz



S. A. Ibrahim

Chief Executive Officer

Rick Altman
Chief Operating Officer



Sponsor

THE PHILADELPHIA FOUNDATION

The Power of Endless Possibilities.™

Since 1918, The Philadelphia Foundation has linked those with financial resources to those who serve societal needs. It is the region's community foundation, serving Bucks, Chester, Delaware, Montgomery and Philadelphia counties.

By growing the 800 funds established by its donors and distributing \$20 million annually in grants and scholarships to effective nonprofit organizations, The Philadelphia Foundation improves Southeastern Pennsylvania's quality of life. The Foundation helps build healthy communities, strengthen children and families, advance economic opportunities and enhances culture and recreation. **For more information, visit www.philafound.org**



R. Andrew Swinney
President



Beatriz F. Viera
*Vice President
for Philanthropic
Services*

Pat Meller
*Vice President
for Finance &
Administration*



Sponsor

Progressive Business Publications

Progressive Business Publications is a diversified information company comprised of 15 divisions and product lines that provide expert print and online business information and resources helping business, nonprofit and government professionals do their jobs better. From a small startup, we've grown to more than 700 employees strong, proud to serve the tens of thousands of managers and professionals who rely on us year after year.

For over two decades, Progressive Business Publications has quietly achieved unparalleled success in the field of specialized information and education services. We have successfully launched 11 new businesses in the last eight years alone and our record of new product launches and successful expansion into high-growth business areas is unmatched in our industry.

Along the way, we've attracted and retained an extraordinary staff of talented professionals who are committed to building the company's future. PBP's unique culture stresses long-term thinking with respect to our customers, our employees and our financial goals.

www.PBP.com



Ed Satell
CEO & Founder

Sponsors

TEAM Pennsylvania

F O U N D A T I O N

Team Pennsylvania Foundation is a non-partisan, charitable, non-profit created in 1997 to bridge the gap between government and the private sector to allow both sides to partner for the betterment of the Commonwealth of Pennsylvania.

www.TeamPA.com



Matt Zieger
President & CEO



Ryan Unger
Chief Operating Officer

Greater Philadelphia Tourism Marketing Corporation (GPTMC) is a private, non-profit organization that promotes leisure travel to Philadelphia and The Countryside®. GPTMC makes Philadelphia and The Countryside® a premier destination through marketing and image building that increases business and promotes the region's vitality.



**Greater Philadelphia
Tourism Marketing Corp**

visitphilly.com



Meryl Levitz
President & CEO



Veronica Wentz
*Director of Internet
Partnerships*

Photo by J. Graham for GPTMC

Sponsors



PHILADELPHIA INTERNATIONAL MEDICINE

Philadelphia International Medicine (PIM) links patients, leading physicians, and healthcare professionals from around the world to a comprehensive network of medical treatment, medical education and healthcare management services.



Leonard Karp

www.PhiladelphiaMedicine.com *President & CEO*

Vistæ

TOP OF THE TOWER

Top of the Tower opened as a public facility in 1995. Top of the Tower boasts stunning panoramic views of Philadelphia and surrounding countryside. The distinctive grace of these lovely rooms provides elegant ambience and a fine dining experience.

www.TopoftheTower.com



Louisa Kochman & J. Mickey Rowley, Owners

Media Partners



"Your Go-to source for all things Philly, PR, and Social Media"

Kate Marlys
Owner & Founder



www.PhillyPRGirl.com

Mark DiBartolomeo
Account Executive & Producer



www.ccfv.com

Center City Film & Video is a full service video and interactive production company serving the Philadelphia region for nearly three decades. Our guiding principle and reputation is to consistently produce work that exceeds expectations while making the production experience personally enjoyable for all involved. Special thanks to Dave Koslow.



NewsMedia



Hernan Guaracao
CEO

AL DIA is an American News Media company seeking to contribute to the dialogue on Latino issues nation-wide.

www.Aldiainc.com

Leadership of the Association

— Officers —

John F. Smith, III, Reed Smith LLP, Chair

Nancy Gilboy, International Visitors Council of Philadelphia, Vice Chair

Claudia McBride, World Affairs Council of Philadelphia, Vice Chair

Peter Gonzales, Welcoming Center for New Pennsylvanians, Vice Chair

Molly Roth, Library Company of Philadelphia, Vice Chair

Tanya Steinberg, International House of Philadelphia, Treasurer

Christiaan Morssink, United Nations Association of Greater Philadelphia,
Secretary

Zabeth Teelucksingh, Global Philadelphia Association, Executive Director

— Directors —

Peter Alois, Alois Global Trade Strategies, LLC

Richard Atkins, International Visitors Council

David Briel, Commonwealth of Pennsylvania

Linda Conlin, World Trade Center of Greater Philadelphia

Ben Craig, Global Interdependence Center

Kosh Dapthary, Chemtech International, Inc.

Barry Eiswerth, H2L2 Architects

Jack Ferguson, Philadelphia Convention & Visitors Bureau

Mark Gale, Philadelphia International Airport

Alan Greenberger, City of Philadelphia

Leonard Karp, Philadelphia International Medicine

Mary Day Kent, United Nations Association of Greater Philadelphia

Meryl Levitz, Greater Philadelphia Tourism and Marketing Corporation

Alan Luxenberg, Foreign Policy Research Institute

Tom Morr, Select Greater Philadelphia

Julie Mostov, Drexel University Office of International Programs

Michael Scullin, Consular Corps Association of Philadelphia

Anastasia Shown, African Studies Center at the University of Pennsylvania

Craig Snyder, World Affairs Council of Philadelphia

James Straw, KSK Architects

Ella Torrey, Chamounix Mansion International Hostel and Meeting Center

Judee Von Seldeneck, Diversified Search

Kathleen Wilkinson, Philadelphia Bar Association

Cathy Zurbach, Women's Campaign International

Members of the Association

— Organizations —

ABBYY Language Services USA
Al-Bustan Seeds of Culture
AL DIA
Alliance Francaise de Philadelphie
Alois Global Trade Strategies, L.L.C.
American Friends Service Committee
American INSIGHT
Berlitz Learning Center Philadelphia
Campus Philly
CETRA Language Solutions
Center City Film and Video
Chemtech International Inc.
The Children's Hospital of Philadelphia
China Partnership of Greater Philadelphia
The City of Philadelphia
Citizens Bank
The Commonwealth of Pennsylvania
Community College of Philadelphia
Consular Corps Association of Philadelphia
Curtis Institute of Music
The Dialogue Institute at Temple
Diversified Search
Drexel University
The Economy League of Greater Philadelphia
Encyclopedia of Greater Philadelphia
Fairmount Water Works Interpretive Center
Foreign Policy Research Institute
The Free Library of Philadelphia
Free Tours By Foot
Freedom Theatre
Friends of Chamounix Mansion
Friends of Independence National Historical Park
Geographical Society of Philadelphia
German American Chamber of Commerce
Global Education Motivators

Members of the Association

The Global Interdependence Center
Greater Philadelphia Cultural Alliance
Greater Philadelphia Tourism Marketing Corporation
H2L2 Architects/Planners LLC
International House Philadelphia
International Opera Theater
The International Visitors Council of Philadelphia
Italian Professionals in Philadelphia
The Japan-America Society of Greater Philadelphia
KSK Architects Planners Historians Inc.
The Laws Project for Nuclear Awareness
The Library Company of Philadelphia
Lockheed-Martin
MTM LinguaSoft
Main Line Chinese Culture Center
Mural Arts Program
The National Constitution Center
National Label Company
The Nationalities Service Center
PA Council on International Education
Pan American Academy Charter School
Philadelphia Bar Association
The Philadelphia Convention and Visitors Bureau
The Philadelphia Foundation
Philadelphia Chamber Music Society
Philadelphia Global Water Initiative
Philadelphia International Airport
Philadelphia International Medicine
Philadelphia Zoo
Philly PR Girl
Progressive Business Publications
Reed Smith LLP
Rita's Water Ice
Russian Mosaica Heritage Festival
Scandinavian-American Business Forum
Select Greater Philadelphia

Members of the Association

Swedish-American Chamber of Commerce – Philadelphia

TeamPA Foundation

Temple University

Triumph International Business Consulting

The Sub Sahara Chamber of Commerce

The U.N. Association of Greater Philadelphia

Weber Gallagher Simpson Stapleton Fires & Newby LLP

The Welcoming Center for New Pennsylvanians

The Wistar Institute

The World Affairs Council of Philadelphia

The World Trade Center of Greater Philadelphia

University City Science Center

University of Pennsylvania:

- African Studies Center
- Middle East Center
- South Asia Center
- Center for East Asian Studies

Penn Museum

University of the Sciences

Villanova University Center for Global Leadership

Women's Campaign International

— Individual Members —

Enid H. Adler, Esquire

Richard Altman – Chief Risk Officer, Radian Group

Richard Atkins – Owner, International Recoveries, LLC

Yelena Barychev – Partner, Blank Rome LLP

Amanda Bergson-Shilcock – Welcoming Center for
New Pennsylvanians

Trachanda Brown – Director of International Student
Services, Chestnut Hill College

Luz Cardenas – CGC Communications

Blandine Chantepie-Kari – BCK Global, LLC

John Forer – President, Your Benefits Program LLC

Howard Fox – Import Broker, Jade International

Yi (Harvey) Feng, Ph.D. – CEO, CropLord

Laurel Grady – Curtis Institute

Members of the Association

Craig Hamilton, VP of Development,
The Philadelphia Orchestra

Frederick Heldring – Founder of the Global
Interdependence Center

Prof. Richard H. Immerman – Director of the Center for the
Study of Force and Diplomacy, Temple University

Mary Day Kent – Community Volunteer

Cathryn Kim

Constance Kirker – Penn State Brandywine Campus

Monica Kreidie – Independence Charter School

Stephen J. Mathes, Esquire – Law Offices of Stephen J.
Mathes

Jillian Murphy – Bridgette Mayer Gallery

Nicholas Pagon – Writer

Han Pan – Executive Director, Chinese Restaurant
Association of Philadelphia

Lisa Parker – Coordinator, Peace Day Philly

Diane Penneys Edelman – Assistant Dean for Legal
Writing and Director of International Studies Programs at
Villanova University School of Law

Peter W. Quigley – Managing Member and CIO,
Renvyle Partners, LLC

Molly D. Roth, Ph.D. – Executive Director, The Library
Company of Philadelphia

Wayne Strasbaugh – Ballard Spahr LLP

Daniel Suschenski – President, KCX Consulting

Daniele Thomas-Easton – France-Philadelphie

Stephen Tippet – Director, EstudiaChile, LLC

James Toffel – Corporate Traveler US

Ella Torrey – Community Volunteer

Claudio Waller – ghSmart

W. David Woods, Ph.D. – Research Associate –
Prof., Drexel University College of Medicine

**Our sincere gratitude belongs to all of GPA's
members. We look forward to seeing you at
GlobalPhilly™ events and celebrations.**

You make our region better.

GlobalPhilly™ 2013 Team

Staff

Zabeth Teelucksingh – Executive Director

Kathleen Quigley – Director of Communications

Asmaa Lahlou – GlobalPhilly™ 2013 Coordinator

Marine Havel – Webmaster

Rhona Gold – Association Coordinator

Interns & Co-ops

Jackson Cruitt - Temple University

Amanda Finlaw - Chestnut Hill College

Brendan Mills - Temple University

Bianca Robinson - Drexel University

Devika Krishna P. Shah - Drexel University

A Special Thank You to the GPA Program Committee

Linda Conlin, Chair

Claudia McBride, Vice Chair

Barry Eiswerth

Len Karp

Mary Day Kent

Danette O'Connell

Veronica Wentz

Association Accountants



Join the Association!

Who Should Become a Member? Everyone with an interest in the global future of Greater Philadelphia! The Association was founded by nine of the leading internationally-focused organizations in the region, but all who have a stake in enhancing our international profile—including governmental agencies, corporations, not-for-profits, educational institutions, foundations, and individuals—should be members. Membership levels for Calendar Year 2013 are listed below. For additional information, please contact GPA Executive Director Zabeth Teelucksingh, at zabeth@globalphiladelphia.org.

Sponsoring Members: \$1,000–\$2,500*

- Home Page Feature Story
- Complimentary Use of GPA Mailing List
- Promotional Opportunities at Networking Events
- All Benefits of Lower Levels of Membership

Supporting Members: \$250–\$500

- Featured News/ Event Item
- Editorial Access to Member Listing & Calendar Listings
- Acknowledgment on Website
- Listing on Membership Brochure
- All Benefits of Lower Levels of Membership

General Members: \$100

- Enhanced Listing on Association's Website
- "Related Content" Push
- Networking Event Attendance & Recognition

Membership Application

I/we would like to be a _____ Sponsoring Member (large businesses and institutions: \$1,000–\$2,500) _____ Supporting Member (medium-size nonprofit organizations: \$250–\$500) _____ General Member (others: \$100) of the Association. My/my organization's check covering my/our annual membership contribution has been made payable to "Global Philadelphia Association," and is enclosed.

Name of individual or organization: _____

If organization, person responding and position: _____

Address: _____ Zip Code: _____

Email: _____

Telephone: _____ (Daytime) _____ (Evening) _____

Description of international involvement/interest: _____

Best person to work with in developing my/our listing and information on the Association's website:

Name: _____ Contact information: _____

Mail in an envelope to : The Global Philadelphia Association, 2500 One Liberty Place, 1650 Market Street, Philadelphia, PA 19103, Attn: Zabeth Teelucksingh

— *To link your web presence, send notifications to webmaster@globalphiladelphia.org —*

Global Resources in PHL

Children’s Hospital of Philadelphia

215-590-1000 | www.chop.edu

Consular Corps Association of Philadelphia

www.consularcorpsofphiladelphia.org

Economy League of Greater Philadelphia

215-875-1000 | economyleague.org

Free Library of Philadelphia

215-686-5322 | www.freelibrary.org

Global Interdependence Center

215-238-0990 | www.interdependence.org

Greater Philadelphia Chamber of Commerce

215-545-1234 | www.greaterphilachamber.org

Greater Philadelphia Tourism Marketing Corporation

www.visitphilly.com | www.uwishunu.com

International House Philadelphia

215-387-5125 | www.ihousephilly.org

International Visitors Council

215-683-0999 | www.ivc.org

Mayor’s Office of Immigration and Multicultural Affairs

moima@phila.gov | www.phila.gov/ima/Pages/default.aspx

Nationalities Service Center

215-893-8400 | www.nationalitiesservice.org/

PA Department of Community & Economic Development

866-466-3972 | www.newpa.com

Philadelphia Convention and Visitors Bureau

215-636-3300 | www.discoverPHL.com

Philadelphia Department of Commerce

215.683.2100 | startupphl@phila.gov

Philadelphia International Airport

215-937-6800 | www.phl.org

Philadelphia International Medicine

215-575- 3727 | www.philadelphiamedicine.com

Philadelphia Regional Port Authority

215-426-2600 | www.philaport.com

Select Greater Philadelphia

215-790-3737 | www.selectgreaterphiladelphia.com

South Eastern Pennsylvania Transit Authority

215-580-7800 | www.septa.org

United Nations Association of Greater Philadelphia

215-241-5738 | www.una-gp.org

Welcoming Center for New Pennsylvanians

215-557-2626 | www.welcomingcenter.org

World Affairs Council

215-561-4700 | www.wacphila.org

World Trade Center of Greater Philadelphia

215-586-4240 | www.wtcphila.org



The world is happening
in PHL

GLOBAL 2013
PHILLY™

September 15 - November 1



ADVOCACY • ARTS • COMMERCE • CUISINE • EDUCATION • HERITAGE • SPORTS

47 DAYS / DOZENS OF EVENTS

An international exposition presented by the Global Philadelphia Association

www.globalphiladelphia.org | Ph: 215-241-5495

DESIGN: Ute Kraidy
www.utekraidy.com

facebook.com/globalphilly2013 | @globalphilly13

 **Progressive Business Publications**

A company dedicated to corporate social responsibility

Passport printed courtesy of Progressive Business Publications